

EDL-118TW

Order No. 0163850

100V

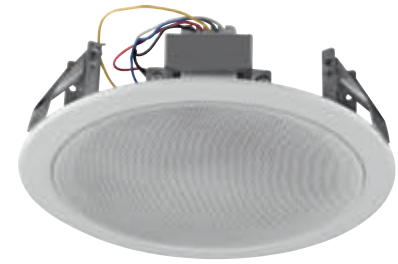
EDL-116TW

Order No. 0163840

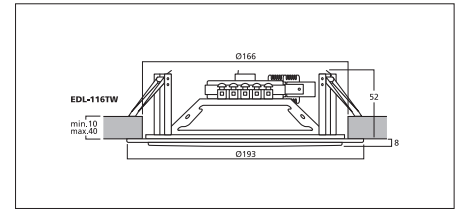
100V

PA ceiling speakers, with integrated tweeter.

- 100 V transmission technology
- 2-way coaxial speaker
- Metal housing with protective grille
- Quick-mounting facility with spring clips
- Connection via spring-loaded terminal
- For a ceiling thickness from 10 to 40 mm



Model	EDL-118TW	EDL-116TW
Frequency range	90-20,000 Hz	90-20,000 Hz
Power rating (RMS)	15/10/6/3 W	10/6/3/1.5 W
SPL	94 dB/W/m	92 dB/W/m
Max. rated SPL	106 dB	102 dB
Mounting cutout	Ø 216 mm	Ø 166 mm
Dimensions	Ø 252 mm x 85 mm	Ø 195 mm x 55 mm
Colour	white	white
Weight	1.21 kg	0.82 kg



EDL-18

Order No. 0163830

100V

EDL-16

Order No. 0163820

100V

EDL-15

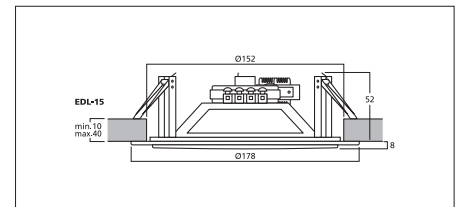
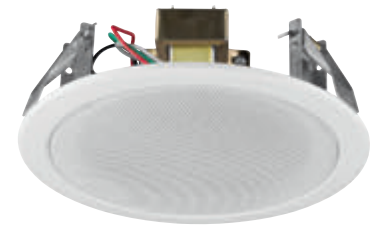
Order No. 0163810

100V

PA ceiling speakers

- 100 V transmission technology
- EDL-18: 20 cm (8") full range speaker
- EDL-16: 15 cm (6") full range speaker
- EDL-15: 13 cm (5") full range speaker
- Metal housing with protective grille
- Quick-mounting facility with spring clips
- Connection via spring-loaded terminal
- For a ceiling thickness from 10 to 40 mm

Model	EDL-18	EDL-16	EDL-15
Frequency range	90-16,000 Hz	90-16,000 Hz	100-16,000 Hz
Power rating (RMS)	10/6/3/1.5 W	10/6/3/1.5 W	6/3/1.5 W
SPL	94 dB/W/m	92 dB/W/m	92 dB/W/m
Max. rated SPL	106 dB	102 dB	100 dB
Mounting cutout	Ø 216 mm	Ø 166 mm	Ø 152 mm
Dimensions	Ø 252 mm x 85 mm	Ø 195 mm x 55 mm	Ø 182 mm x 50 mm
Colour	white	white	white
Weight	1.18 kg	0.8 kg	0.6 kg



EDL-28

Order No. 0161460

100V

EDL-26

Order No. 0161450

100V

EDL-25

Order No. 0161440

100V

EDL-24

Order No. 0161430

100V

PA ceiling speakers

- 100 V transmission technology via audio transformer with power taps
- Full range speaker with dual cone
- Plastic housing with protective metal grille
- ABS plastic material, self-extinguishing according to UL 94V-0
- For a ceiling thickness from 10 to 40 mm



Model	EDL-28	EDL-26	EDL-25	EDL-24
Frequency range	60-14,000 Hz	80-14,000 Hz	100-14,000 Hz	100-14,000 Hz
Power rating (RMS)	10/5/2.5/1.25 W	10/5/2.5/1.25 W	6/3/1.5 W	6/3/1.5 W
SPL	91 dB/W/m	86 dB/W/m	87 dB/W/m	87 dB/W/m
Max. rated SPL	100 dB	95 dB	94 dB	94 dB
Mounting cutout	Ø 240 mm	Ø 200 mm	Ø 165 mm	Ø 142 mm
Dimensions	Ø 275 mm x 90 mm	Ø 230 mm x 85 mm	Ø 205 mm x 70 mm	Ø 170 mm x 70 mm
Colour	white	white	white	white
Weight	1.14 kg	0.922 kg	0.724 kg	0.63 kg

