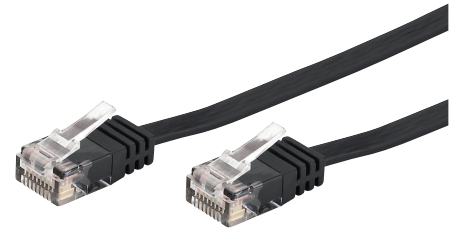


# Components

## Cables and Plug-in Connectors

### Cat. 6 Flat Network Cables, U/UTP

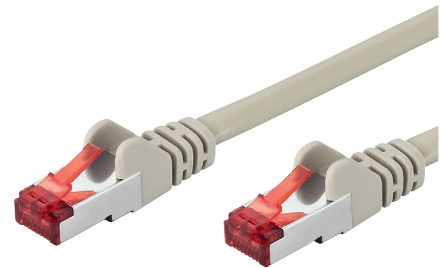
- Very flat and flexible cable material (1.5 mm only), e.g. to easily lay underneath laminate flooring or behind skirting boards
- Small bending radius
- For 10GBASE-T Ethernet
- Data rate: 250 MHz max.
- RJ45 plug on both ends with moulded cable bending protection
- Gold-plated contact surfaces
- Configuration complies with EIA/TIA 568
- Cable specification: 4x2xAWG 26/7 CU
- Width: 6 mm, thickness: 1.5 mm



Model	Order No.	Length	Colour	Power rating
CAT-605F/SW	06.9090	0.5 m	black	Cat. 6, 250 MHz
CAT-61F/SW	06.9100	1 m	black	Cat. 6, 250 MHz
CAT-62F/SW	06.9110	2 m	black	Cat. 6, 250 MHz
CAT-65F/SW	06.9120	5 m	black	Cat. 6, 250 MHz
CAT-610F/SW	06.9130	10 m	black	Cat. 6, 250 MHz

### Cat. 6 Network Cables, Multiple Shielding, S/FTP

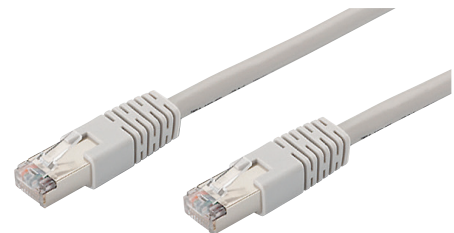
- 1 Gbps
- Conductor pairs in metal foil (PiMF)
- Overall braided shield
- RJ45 plug with moulded cable support sleeve
- Gold-plated contacts
- Configuration complies with EIA/TIA 568
- Cable specification: 4x2xAWG 27/7 CU



Model	Order No.	Length	Colour	Power rating
CAT-6025	06.8210	0.25 m	grey	Cat. 6, 250 MHz
CAT-605	06.8220	0.5 m	grey	Cat. 6, 250 MHz
CAT-61	06.8230	1 m	grey	Cat. 6, 250 MHz
CAT-62	06.8270	2 m	grey	Cat. 6, 250 MHz
CAT-63	06.8290	3 m	grey	Cat. 6, 250 MHz
CAT-65	06.8300	5 m	grey	Cat. 6, 250 MHz
CAT-610	06.8240	10 m	grey	Cat. 6, 250 MHz
CAT-620	06.8280	20 m	grey	Cat. 6, 250 MHz

### Cat. 5e Network Cables, SF/UTP

- 100 Mbps
- Double shielding
- RJ45 plug with moulded cable support sleeve
- Configuration complies with EIA/TIA 568
- Cable specification: 4x2xAWG 26/7 CCA



Model	Order No.	Length	Colour	Power rating
CAT-505	06.6500	0.5 m	grey	Cat. 5e, 100 MHz
CAT-51	06.6510	1 m	grey	Cat. 5e, 100 MHz
CAT-53	06.6520	3 m	grey	Cat. 5e, 100 MHz
CAT-55	06.6530	5 m	grey	Cat. 5e, 100 MHz
CAT-510	06.6980	10 m	grey	Cat. 5e, 100 MHz
CAT-520	06.6990	20 m	grey	Cat. 5e, 100 MHz
CAT-550	06.7000	50 m	grey	Cat. 5e, 100 MHz

### SWITCH-8/1GB

Order No. 06.8620

#### 8-port Gigabit Ethernet switch/hub

- Auto-switching 10/100/1,000 Mbps
- Standards: 802.3 Ethernet, 802.3u Fast Ethernet, 802.3ab Gigabit Ethernet, 802.3az EEE, IEEE 802.3x Flow Control
- Full-duplex and half-duplex for Ethernet and Fast Ethernet, full-duplex (2,000 Mbps) for Gigabit Ethernet
- Supports jumbo frames (9216 bytes) in Gigabit mode
- Automatic crossover detection and crossover adjustment
- 8 x RJ45 jack
- Power is provided via enclosed plug-in power supply



### CAT-1TEST

Order No. 29.2070

**Line tester**, for testing the continuity of Cat. 5 and ISDN network lines.

- Detection of continuity, miswiring, disconnection, short circuit, crossover cable and earthing
- Power supply via 9 V battery (not supplied)
- Supplied with protective bag



### CAT-1TOOL

Order No. 31.0060

#### Network punch down tool

- For LSA connection technology (without soldering, screwing and stripping)
- Metal insertion blade
- Draw-hook and blade release, folding
- Belt clip

