

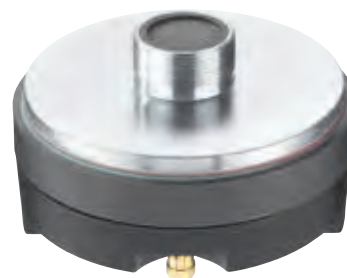
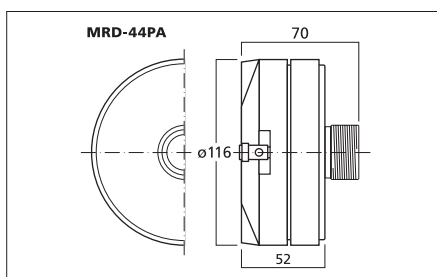
### MRD-44PA

Order No. 10.5310



#### PA horn driver, 45 W, 8 Ω

- 35 mm (1 3/8") standard thread
- Component of the speakers PAB-115MK2 and PAK-115MK2
- Matching replacement voice coil PAB-115/VC available at option
- Suitable for horns MRH-83, MRH-170 and MRH-80



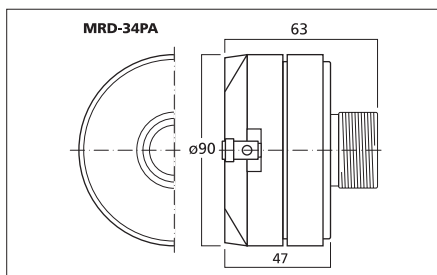
### MRD-34PA

Order No. 10.5300



#### PA horn driver, 35 W, 8 Ω

- 35 mm (1 3/8") standard thread
- Component of the speakers PAB-108MK2, PAB-110MK2 and PAB-112MK2 as well as of the matching PAK speakers
- Matching replacement voice coil PAB-128/VC available at option
- Suitable for horns MRH-120, MRH-83, MRH-170 and MRH-80



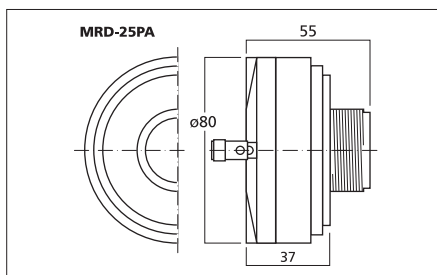
### MRD-25PA

Order No. 10.1900



#### PA horn driver, 25 W, 8 Ω

- 25 mm (1") compact horn driver with ferrite magnets
- Titanium cone with 25 mm voice coil
- Standard 35 mm (1 3/8") thread
- Suitable for horns MRH-83, MRH-80, MRH-170; with adapter MHA-25 also for others
- Matching replacement voice coil MRD-25PA/VC available at option



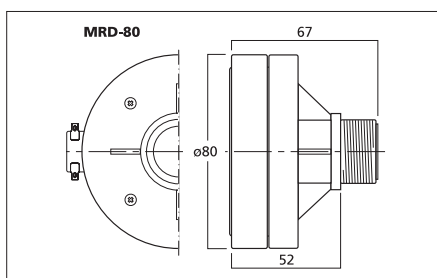
### MRD-80

Order No. 10.4360



#### PA horn driver, 30 W, 8 Ω

- PA tweeter driver with 35 mm (1 3/8") standard thread
- Very compact size
- High efficiency
- Suitable for horns MRH-83, MRH-170 and MRH-80



Model	MRD-44PA	MRD-34PA	MRD-25PA	MRD-80
Impedance (Z)	8 Ω	8 Ω	8 Ω	8 Ω
Frequency range	fx-20,000 Hz	fx-20,000 Hz	fx-20,000 Hz	fx-17,500 Hz
Resonant frequency (fs)	2 kHz	1.2 kHz	2 kHz	2 kHz
Power rating	45 W	35 W	25 W	30 W
Peak music power output	90 W	70 W	50 W	60 W
Sensitivity	105 dB/W/m	104 dB/W/m	100 dB/W/m	107 dB/W/m
Radiation angle	dep. on horn	dep. on horn	dep. on horn	dep. on horn
Voice coil diameter	Ø 44.5 mm	Ø 34.5 mm	Ø 100 mm	Ø 25.5 mm
Mounting cutout	dep. on horn	dep. on horn	dep. on horn	dep. on horn
Dimensions	Ø 116 mm x 70 mm	Ø 90 mm x 63 mm	Ø 80 mm x 55 mm	-
Weight	1.472 kg	0.945 kg	0.673 kg	0.71 kg