

# Components

## Energy, Measuring and DIY

### Series of Alkaline Batteries

From PANASONIC.

- For consumers with high power consumption
- Long storage life

1x 



Model	Order No.	Rated voltage	Type	IEC	ANSI	Capacity	Technology	Quantity	Dimensions	Weight
LR-61	28.1660	9 V	9 V battery	6LR61	9 V	680 mAh	alkaline-manganese	1	25 x 46 x 16 mm	42 g
LRV-08	28.2240	12 V	23A	8LR932	1811A	38 mAh	alkaline-manganese	1	Ø 10 mm x 28 mm	8 g
LR-03	28.1600	1.5 V	AAA size	LR03	AAA	1,200 mAh	alkaline-manganese	4	Ø 10 mm x 44 mm	12 g/pc.
LR-03/24	28.1330	1.5 V	AAA size	LR03	AAA	1,200 mAh	alkaline-manganese	24	Ø 10 mm x 44 mm	12 g/pc.
LR-6	28.1610	1.5 V	AA size	LR6	AA	3,400 mAh	alkaline-manganese	4	Ø 14 mm x 50 mm	25 g/pc.
LR-6/24	28.1340	1.5 V	AA size	LR6	AA	3,400 mAh	alkaline-manganese	24	Ø 14 mm x 50 mm	25 g/pc.
LR-14	28.1620	1.5 V	C size	LR14	C	9,360 mAh	alkaline-manganese	2	Ø 25 mm x 50 mm	68 g/pc.
LR-20	28.1630	1.5 V	D size	LR20	D	19,760 mAh	alkaline-manganese	2	Ø 34 mm x 60 mm	142 g/pc.

### Series of Lithium Batteries

From PANASONIC.

- Button cells for watches, organisers, pocket calculators, etc.

PAIR 



Model	Order No.	Rated voltage	Type	IEC	Capacity	Technology	Quantity	Dimensions	Weight
CR-2016	28.1780	3 V	button cell	CR2016	90 mAh	lithium-manganese dioxide	2	Ø 20 mm x 1.6 mm	1.7 g
CR-2025	28.1870	3 V	button cell	CR2025	165 mAh	lithium-manganese dioxide	2	Ø 20 mm x 2.5 mm	2.5 g
CR-2032	28.1750	3 V	button cell	CR2032	210 mAh	lithium-manganese dioxide	2	Ø 20 mm x 3.2 mm	3.3 g
CR-2032/6	28.1320	3 V	button cell	CR2032	210 mAh	lithium-manganese dioxide	6	Ø 20 mm x 3.2 mm	26 g
CR-2354	28.0090	3 V	button cell	CR2354	560 mAh	lithium-manganese dioxide	1	Ø 23 mm x 5.4 mm	6 g

#### LR-44

Order No. 28.1640



Alkaline battery  
from PANASONIC

- Button cell (LR44)
- Capacity: 1.5 V/105 mAh
- Dimensions: Ø 11.6 mm x 5.4 mm
- Weight: 2 g



#### GP-11A

Order No. 28.0100

Alkaline battery

- As a replacement battery matching RC-86W and RC-89
- Capacity: 6 V/38 mAh
- Battery type: L1016
- Dimensions: Ø 10 mm x 11 mm
- Weight: 4 g



#### ACCU-CASE

Order No. 03.0700

Transport case

- For storing 4 rechargeable batteries or batteries AA size or AAA size
- Transparent plastic version
- Protects against short circuit or damage

Supplied w/o rech. batteries.

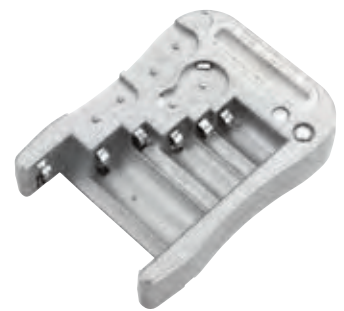


#### BT-11

Order No. 29.1910

Battery tester, w. LCD bar graph display.

- For different types of batteries and rech. batteries: AAA size, AA size, C size, D size, 9 V battery, CR123A, CR2, CR-V3, 2CR5, CR-P2, 1.5 V and 3 V button cells
- Power supply via 1.5 V battery AAA size (not supplied)



#### DCA-20D

Order No. 03.0720

Battery adapter AA size/D size

Practical adapter for general application of a high-capacity battery or a rech. battery AA size in a battery compartment D size.

Supplied w/o rech. batteries.



#### DCA-14C

Order No. 03.0710

Battery adapter AA size/C size

Practical adapter for general application of a high-capacity battery or a rech. battery AA size in a battery compartment C size.

Supplied w/o rech. batteries.

