

SPE-82HQ

Order No. 10.5770



SPE-62HQ

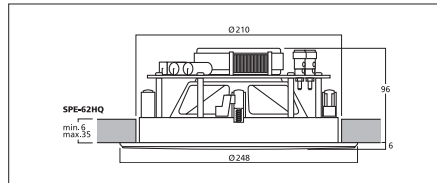
Order No. 10.5760



Hi-fi wall and ceiling speaker

- 2-way version with coaxial dome tweeter
- 20 cm (8") bass speaker with waveguide and 25 mm (1") silk dome
- Tweeter movable via ball joint
- Excellent sound characteristics
- Stylish flush fit protective metal grille with slim plastic frame
- Protective grille magnetically attached to the speaker front
- For a wall thickness/ceiling thickness from 6 to 35 mm

Model	SPE-82HQ	SPE-62HQ
Frequency range	30-20,000 Hz	50-20,000 Hz
Resonant frequency (fs)	40 Hz	60 Hz
Power rating (RMS)	50 W	35 W
Peak music power output (MAX)	100 W	70 W
Sensitivity	89 dB/W/m	89 dB/W/m
Mounting cutout	Ø 252 mm	Ø 210 mm
Dimensions	Ø 295 mm x 100 mm	Ø 250 mm x 98 mm
Weight	1.8 kg	1.54 kg



SPE-802HQ

Order No. 10.5790



SPE-602HQ

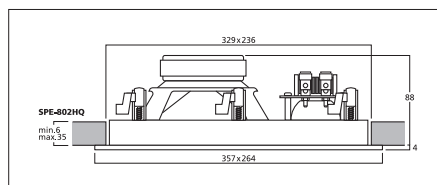
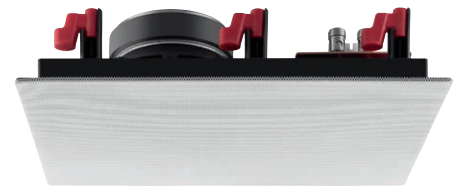
Order No. 10.5780



Hi-fi wall and ceiling speaker

- 2-way version with dome tweeter
- 20 cm (8") bass speaker and 25 mm (1") silk dome with waveguide
- Excellent sound characteristics
- Protective metal grille
- Protective grille magnetically attached to the speaker front
- Adjustable tweeter level ± 3.0 dB
- For a wall thickness/ceiling thickness from 6 to 35 mm

Model	SPE-802HQ	SPE-602HQ
Frequency range	30-20,000 Hz	50-20,000 Hz
Resonant frequency (fs)	40 Hz	60 Hz
Power rating (RMS)	50 W	35 W
Peak music power output (MAX)	100 W	70 W
Sensitivity	89 dB/W/m	89 dB/W/m
Mounting cutout	329 x 236 mm	264 x 180 mm
Dimensions	357 x 264 x 92 mm	289 x 205 x 85 mm
Weight	2.1 kg	1.65 kg



SPE-252HQ

Order No. 10.5800



Hi-fi wall and ceiling speaker, 50 W, 8 Ω

- 2-way version with dual bass speaker and dome tweeter
- 2 x 13 cm (5") bass speaker and 25 mm (1") silk dome
- Excellent sound characteristics
- Protective metal grille
- Protective grille magnetically attached to the speaker front
- Ideally suited e.g. as a centre speaker
- For a wall thickness/ceiling thickness from 6 to 35 mm

Model	SPE-252HQ
Frequency range	60-20,000 Hz
Resonant frequency (fs)	65 Hz
Power rating (RMS)	50 W
Peak music power output (MAX)	100 W
Sensitivity	88 dB/W/m
Mounting cutout	365 x 157 mm
Dimensions	391 x 183 x 75 mm
Weight	2.6 kg

