

### ESP-62AB/WS

Order No. 16.3660

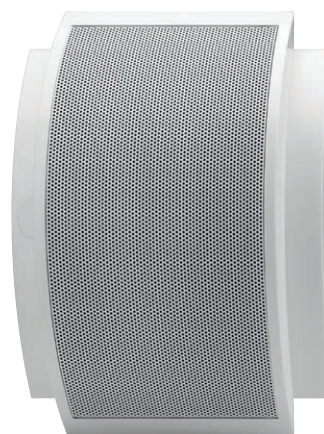


**PA A/B wall speaker**, with EN 54-24 certification for evacuation systems with A/B speaker distribution according to EN 60849.

- 100 V line technique
- 13 cm full range speaker with dual voice coil
- 2 separate transformers with power taps with 6/3/1.5 W each
- Connection via 2 ceramic screw terminals inside the cabinet
- Symmetrical design allows for horizontal and vertical mounting

Model	ESP-62AB/WS
Frequency range	80-19,000 Hz
Number of speakers	1
Power rating (RMS)	2 x 6/3/1.5 W
Sensitivity	93 dB/W/m
Beam angle	160°
Housing material	ABS
Colour	white, RAL 9010
Mounting device	screws
Admiss. ambient temp.	-10 °C to +55 °C
Dimensions	240 x 330 x 83 mm
Weight	1.5 kg

- Plastic cabinet with open rear panel and protective metal front grille
- Supplied with screws and wall plugs



### ESP-62/WS

Order No. 16.3030



**PA wall speaker**, with EN 54-24 certification.

- 100 V line technique via audio transformer with 3 power taps
- Full range speaker with a high-quality sound and a clear voice reproduction
- Plastic cabinet of a special design (open rear panel) with protective metal grille
- Symmetrical design allows for horizontal and vertical mounting
- Supplied with mounting screws and screw head covers
- Ball-proof according to DIN 18032, Part 3

Model	ESP-62/WS
Frequency range	100-19,000 Hz
Power rating (RMS)	6/3/1.5 W
Sensitivity	93 dB/W/m
Housing material	plastic
Colour	white
Admiss. ambient temp.	-10 °C to +55 °C
Dimensions	240 x 330 x 85 mm
Weight	1.2 kg



### ESP-50AB/WS

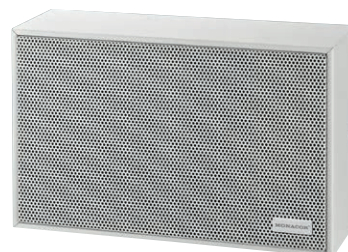
Order No. 16.0120



**PA A/B wall speaker**, with EN 54-24 certification for evacuation systems with A/B speaker distribution according to EN 60849 and DIN VDE 0833-4.

- 100 V line technique
- 2 separate full range speakers (10 cm), each with its own transformer 6/3/1.5 W
- Connection via 2 spring-loaded terminals inside the cabinet
- Wooden cabinet with protective metal grille
- Easy wall mounting via supplied metal bracket and mounting accessories
- Ball-proof according to DIN 18032, Part 3

Model	ESP-50AB/WS
Frequency range	120-20,000 Hz
Number of speakers	2
Power rating (RMS)	2 x 6/3/1.5 W
Sensitivity	92 dB/W/m
Housing material	wood
Colour	white
Mounting device	metal bracket
Admiss. ambient temp.	-10 °C to +55 °C
Dimensions	265 x 165 x 90 mm
Weight	1.9 kg



### ESP-50EN/WS

Order No. 16.0260



**PA wall speaker**, with EN 54-24 certification.

- 100 V line technique
- Full range speaker (13 cm)
- Suitable for voice and music transmissions
- Connection via spring-loaded terminal inside the cabinet
- Wooden cabinet with protective metal grille
- Easy wall mounting via supplied mounting bracket and mounting accessories
- Ball-proof according to DIN 18032, Part 3

Model	ESP-50EN/WS
Frequency range	100-19,000 Hz
Power rating (RMS)	6/3/1.5 W
Sensitivity	93 dB/W/m
Housing material	wood
Colour	white
Admiss. ambient temp.	-10 °C to +55 °C
Dimensions	265 x 165 x 90 mm
Weight	1.6 kg

